

If you are aiming to have your design posted on [cubecraft.com](http://cubecraft.com) keep in mind:  
 No glue or tape should be needed for the finished piece.  
 Keep it safe for work/kids.  
 Make it awesome.

The "eyes & mouth" and fingers are only reference.  
 Red lines are slits where pieces connect.  
 Please feel free to alter the template as you see fit.

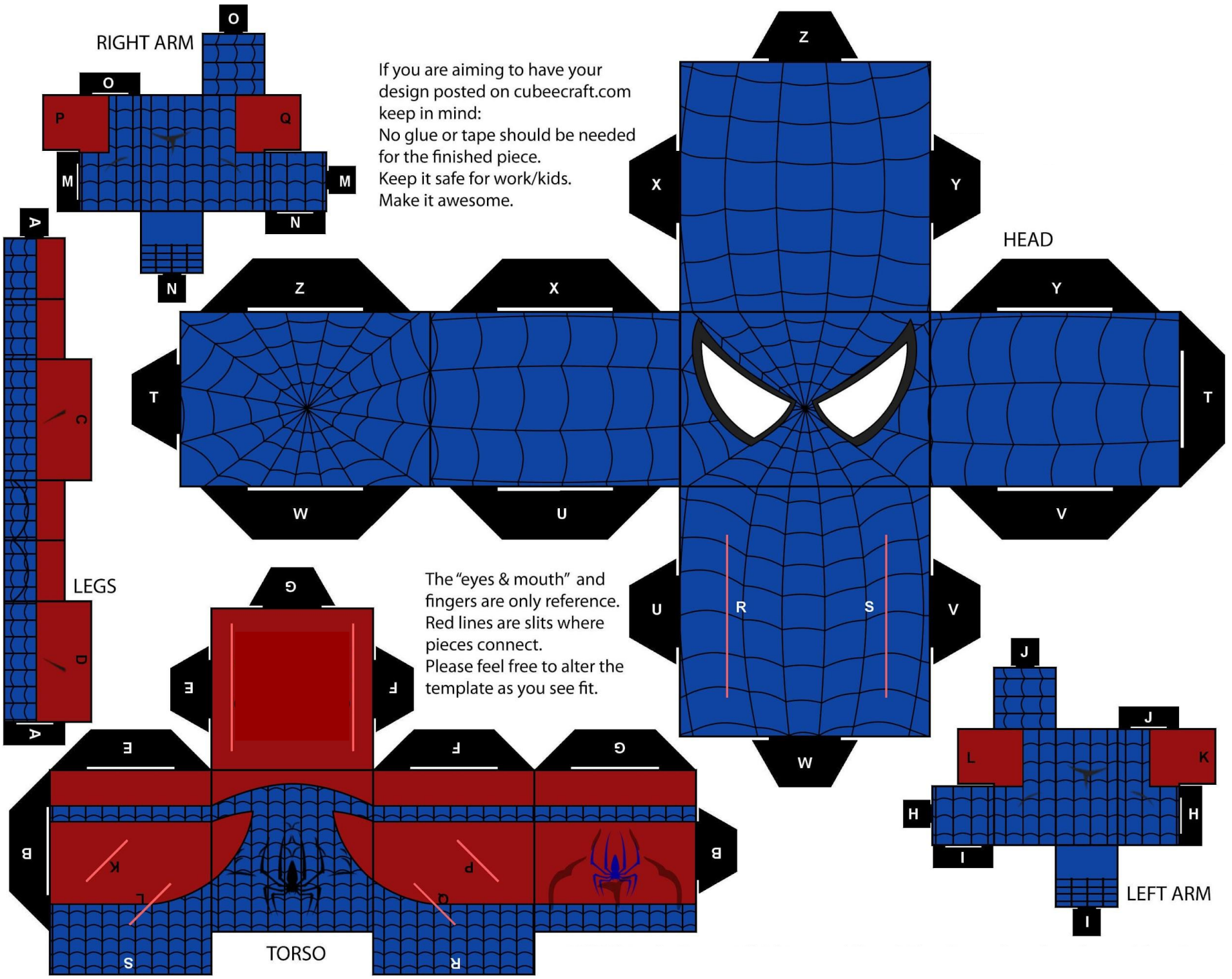
RIGHT ARM

HEAD

LEGS

LEFT ARM

TORSO



RIGHT ARM

If you are aiming to have your design posted on [cubecraft.com](http://cubecraft.com) keep in mind:  
 No glue or tape should be needed for the finished piece.  
 Keep it safe for work/kids.  
 Make it awesome.

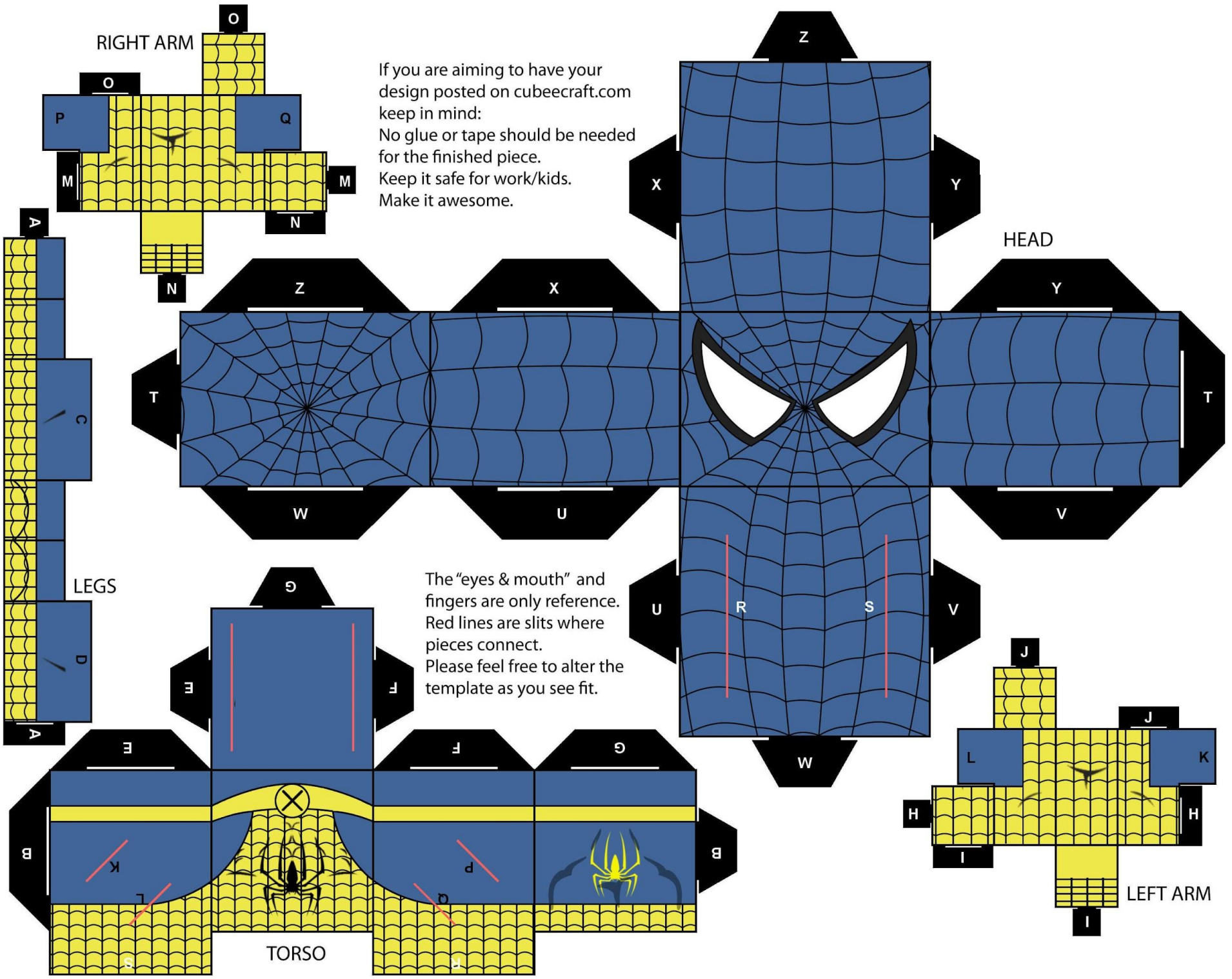
HEAD

LEGS

The "eyes & mouth" and fingers are only reference. Red lines are slits where pieces connect. Please feel free to alter the template as you see fit.

TORSO

LEFT ARM



If you are aiming to have your design posted on [cubecraft.com](http://cubecraft.com) keep in mind:  
 No glue or tape should be needed for the finished piece.  
 Keep it safe for work/kids.  
 Make it awesome.

The "eyes & mouth" and fingers are only reference.  
 Red lines are slits where pieces connect.  
 Please feel free to alter the template as you see fit.

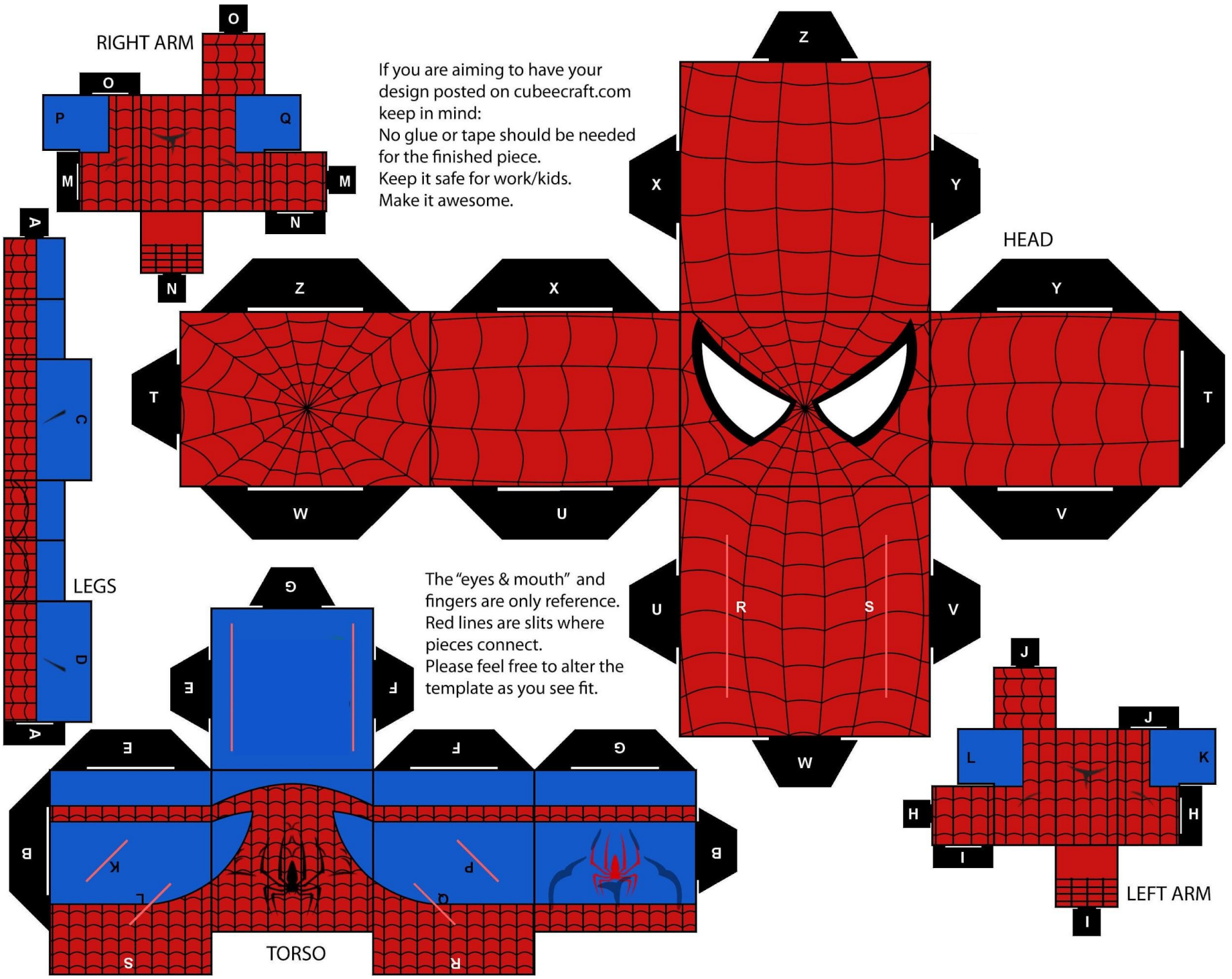
RIGHT ARM

HEAD

LEGS

TORSO

LEFT ARM



RIGHT ARM

If you are aiming to have your design posted on [cubecraft.com](http://cubecraft.com) keep in mind:  
No glue or tape should be needed for the finished piece.  
Keep it safe for work/kids.  
Make it awesome.

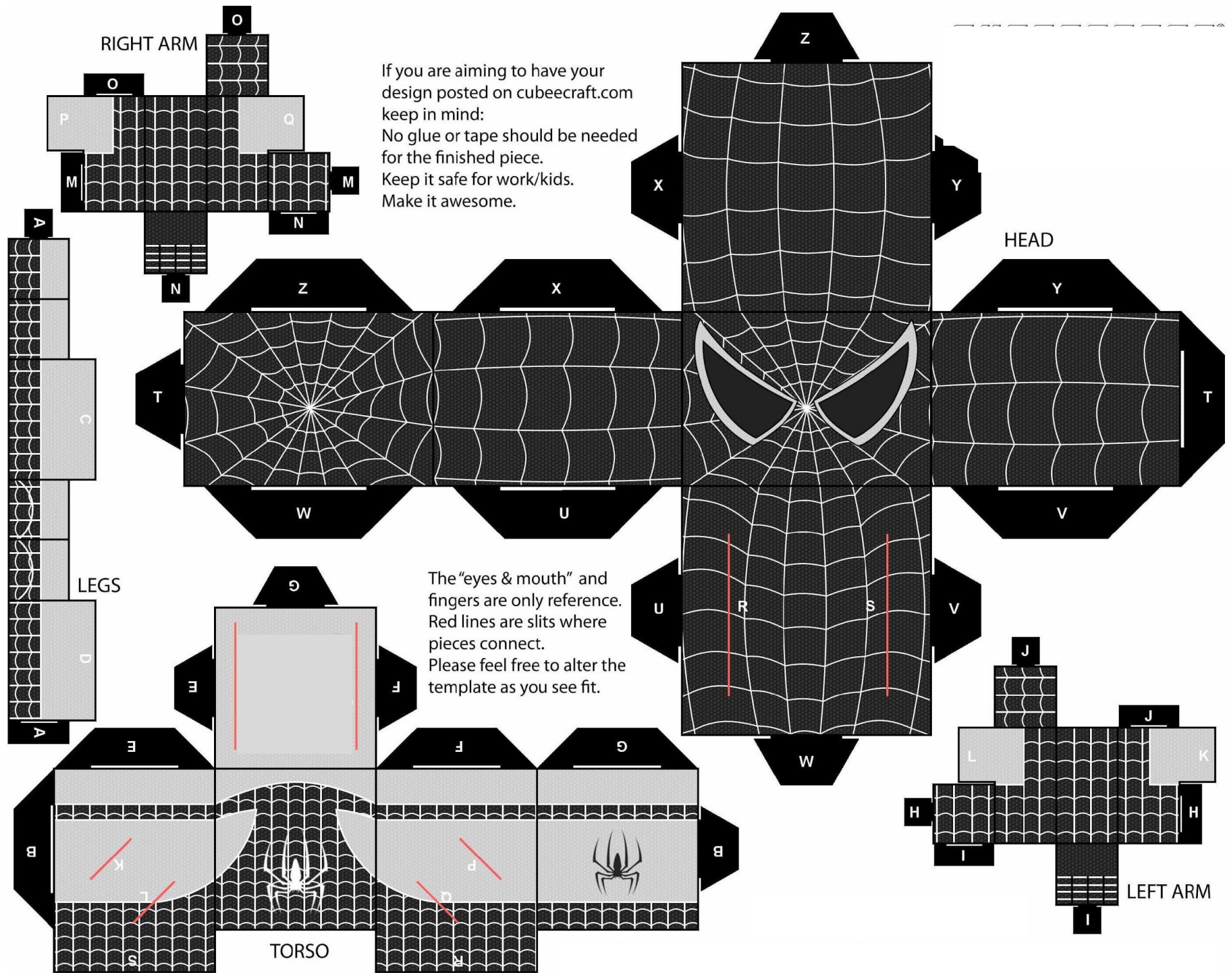
HEAD

LEGS

The "eyes & mouth" and fingers are only reference. Red lines are slits where pieces connect. Please feel free to alter the template as you see fit.

TORSO

LEFT ARM



RIGHT ARM

If you are aiming to have your design posted on [cubecraft.com](http://cubecraft.com) keep in mind:  
 No glue or tape should be needed for the finished piece.  
 Keep it safe for work/kids.  
 Make it awesome.

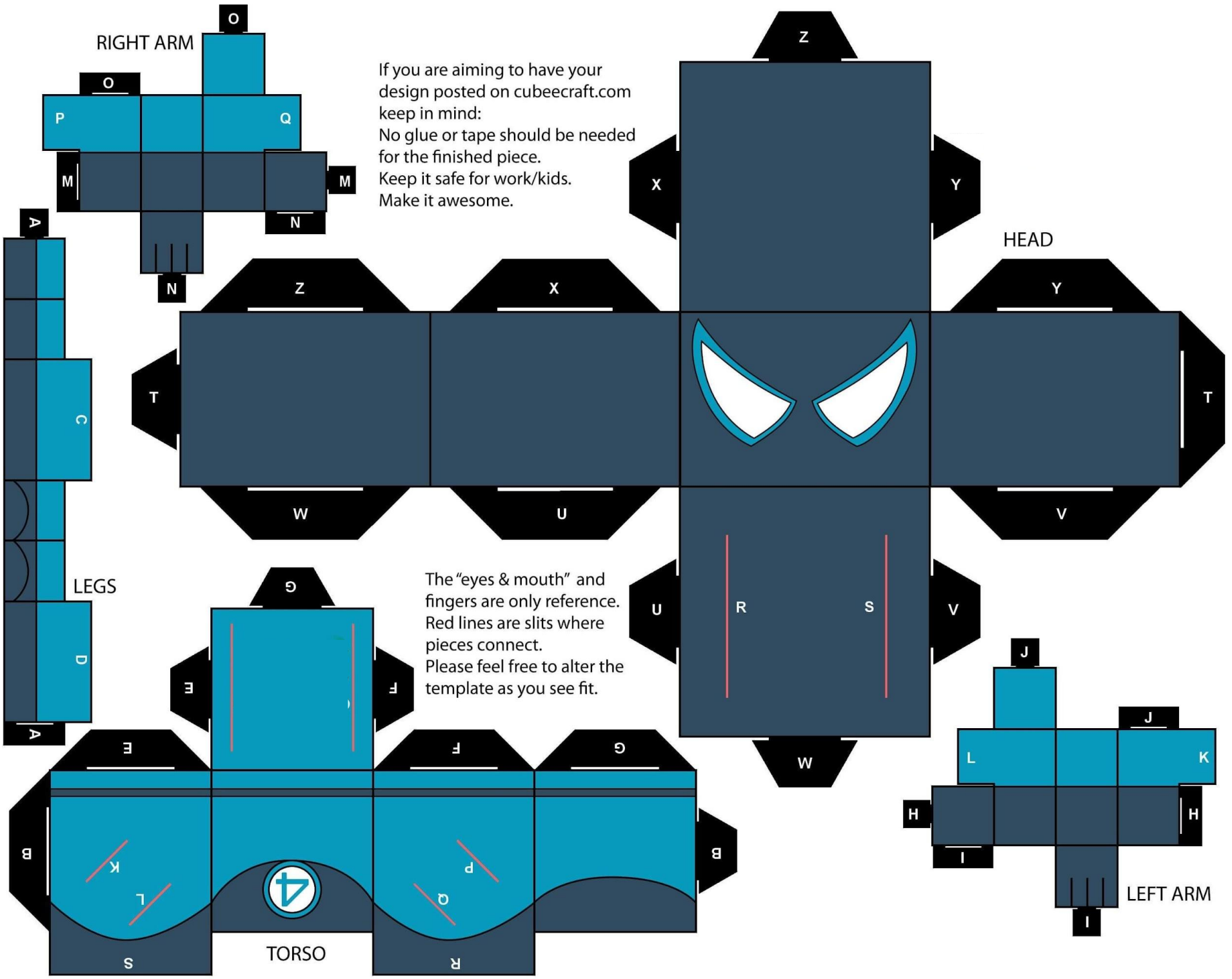
HEAD

LEGS

The "eyes & mouth" and fingers are only reference. Red lines are slits where pieces connect. Please feel free to alter the template as you see fit.

TORSO

LEFT ARM



RIGHT ARM

If you are aiming to have your design posted on [cubecraft.com](http://cubecraft.com) keep in mind:  
No glue or tape should be needed for the finished piece.  
Keep it safe for work/kids.  
Make it awesome.

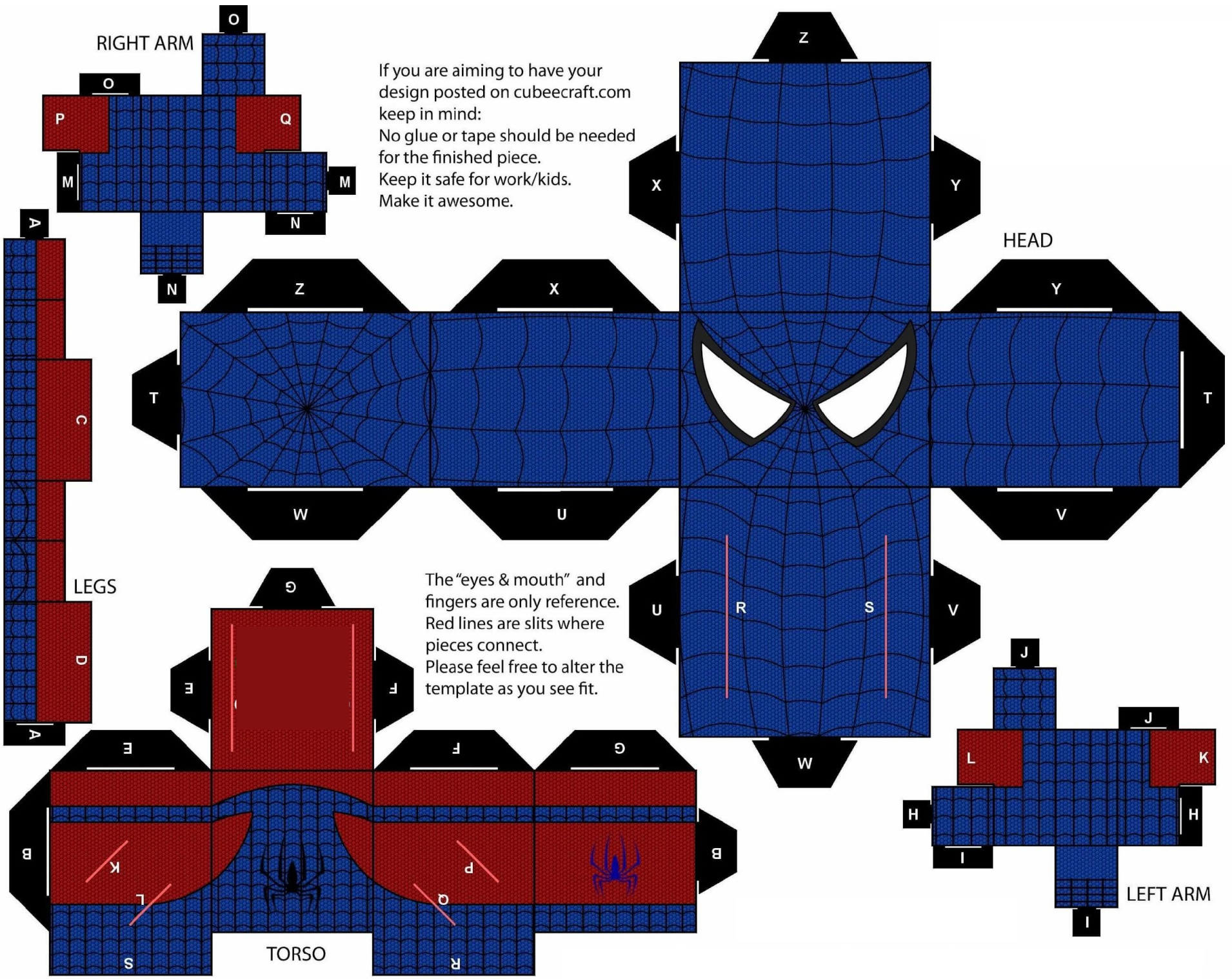
HEAD

LEGS

The "eyes & mouth" and fingers are only reference. Red lines are slits where pieces connect. Please feel free to alter the template as you see fit.

TORSO

LEFT ARM



RIGHT ARM

If you are aiming to have your design posted on cubecraft.com keep in mind:  
No glue or tape should be needed for the finished piece.  
Keep it safe for work/kids.  
Make it awesome.

HEAD

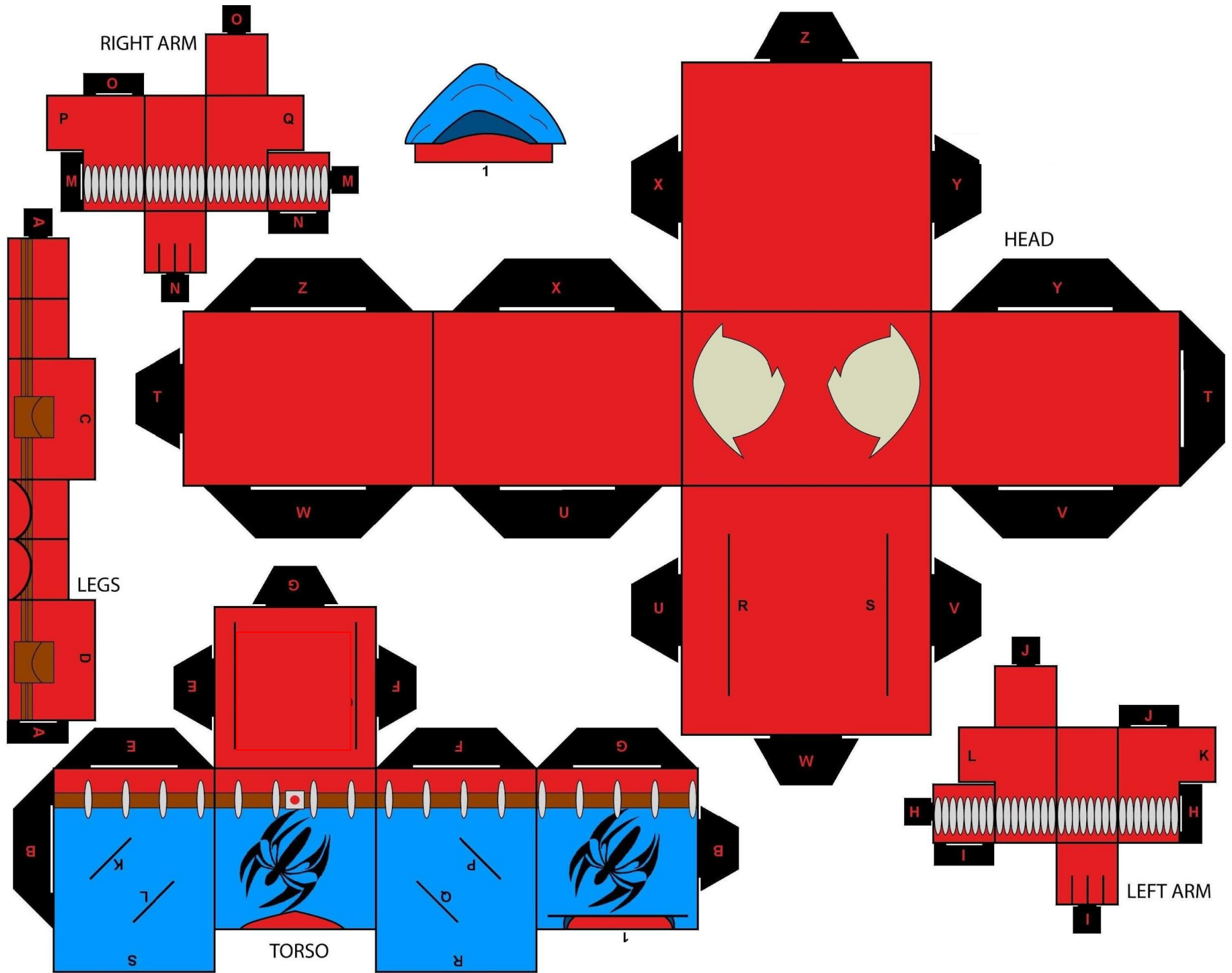
LEGS

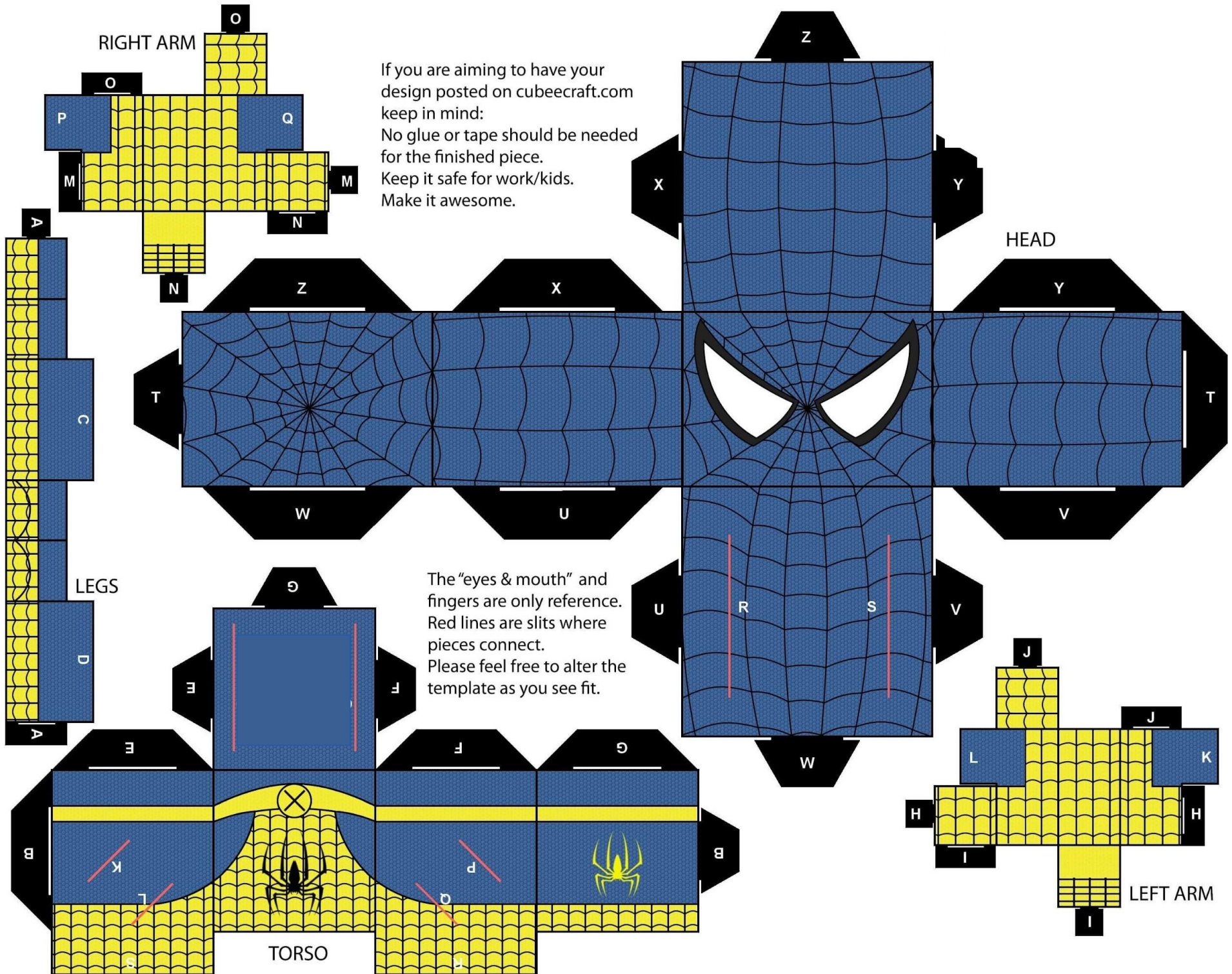
The "eyes & mouth" and fingers are only reference. Red lines are slits where pieces connect. Please feel free to alter the template as you see fit.

TORSO

LEFT ARM







RIGHT ARM

HEAD

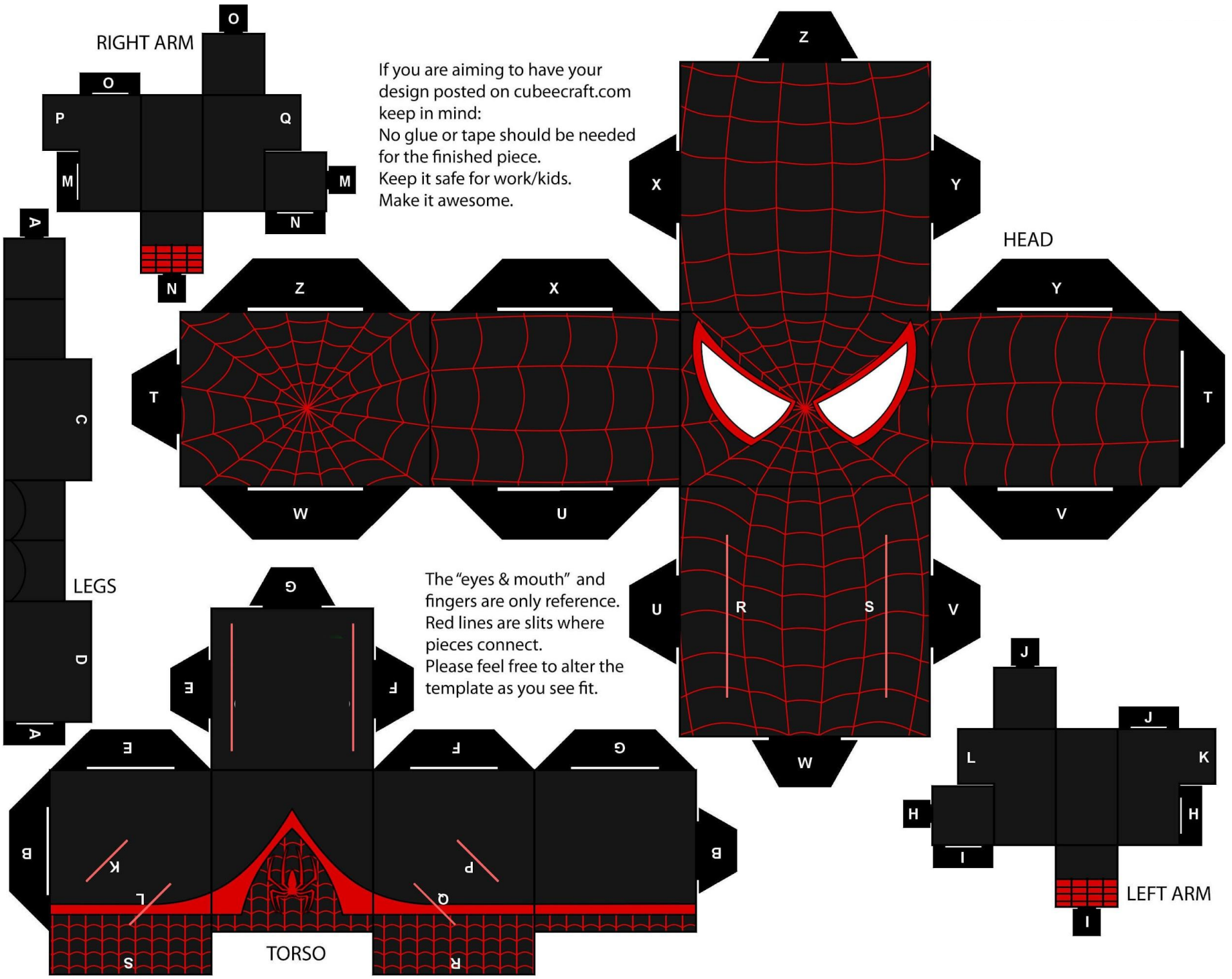
LEGS

TORSO

LEFT ARM

If you are aiming to have your design posted on [cubecraft.com](http://cubecraft.com) keep in mind:  
No glue or tape should be needed for the finished piece.  
Keep it safe for work/kids.  
Make it awesome.

The "eyes & mouth" and fingers are only reference. Red lines are slits where pieces connect. Please feel free to alter the template as you see fit.



If you are aiming to have your design posted on [cubecraft.com](http://cubecraft.com) keep in mind:  
No glue or tape should be needed for the finished piece.  
Keep it safe for work/kids.  
Make it awesome.

The "eyes & mouth" and fingers are only reference.  
Red lines are slits where pieces connect.  
Please feel free to alter the template as you see fit.

RIGHT ARM

HEAD

LEGS

TORSO

LEFT ARM